

SUNKOLL CRACK PACKR Technical Data Sheet



नए भारत क नई ताकत

Main application Can be used to fill cracks in concrete floors, making it ideal for both residential and commercial settings. Designed to repair cracks in concrete surfaces, helping to restore structural integrity.

SUNKOLL CRACK PACKR is a ready to use fiber glass reinforced crack filling compound for both interior and exterior surfaces. It ensures unmatched crack bridging ability for plaster cracks of up to 3 mm.

How To Use



Technical advantage of SUNKOLL CRACK PACKR

- **Strong Bonding:** Provides excellent adhesion to concrete, masonry, and other substrates, ensuring a long-lasting repair.
- **Flexible:** Designed to accommodate movement in the substrate, preventing future cracking and ensuring the repair lasts under stress.
- **Easy Application:** Comes in user-friendly packaging that allows for straightforward application, often with minimal tools required.
- **Quick Curing:** Many formulations cure quickly, enabling faster project completion and reducing downtime.
- **Water Resistance:** Offers water-resistant properties, preventing moisture infiltration that can lead to further damage.

PRODUCT BENEFITS

Crack filling ability:- Strong filling capacity for cracks of up to 3mm width.

Flexibility:- High elongation film that accommodates movement.

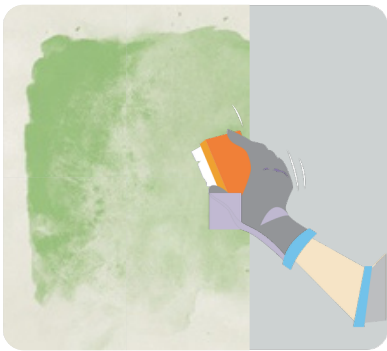
Mechanical strength:- Reinforced with glass fibers for superior mechanical strength.

Waterproofing:- Water resistant film stops water ingress through cracks.

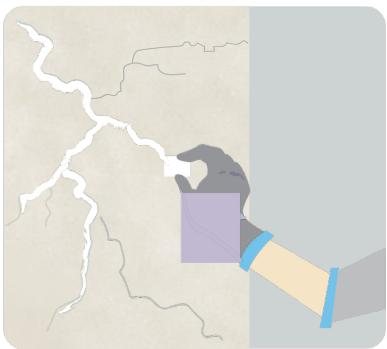
Adhesion:- Very strong adhesion on all absorbent surfaces like plaster, wood, gypsum, POP, asbestos, etc.

Usage:- Single pack ready-to-use and easy-to-apply product.

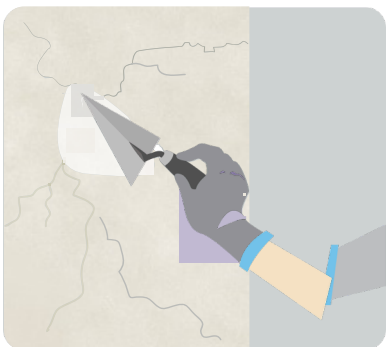
Over coating:- Easily over coated by emulsion paints from SUNKOLL CRACK PACKR.



CLEANING Open the cracks and widen the cracks to form a 'V' shaped groove. This will provide a strong base for adhesion of Crack Packr to the substrate. Clean the area thoroughly to free it from dust and loose particles. It is recommended to use a cutter for opening the cracks.



PRIMING Post cleaning apply Primer in the opened cracks. For interior cracks, use SUNKOLL CRACK PACKR Universal Wall Primer water based Primer and for exterior cracks, use SUNKOLL CRACK PACKR Exterior Primer (as per regular dilution of 20% with water).



Technical Performances

Appearance	Smooth & thick paste. Color off white
Density at 30°C	-1.45±0.1
Consistency	Viscous paste
Non volatile content	Approx 74+/-2%
Tack free time at 23°C	Approx 30 minutes
A vertical slump in mm	Nil
Service temp range °C	-5 to +60
Extension recovery	Approx 60%
Freeze/ thaw stability, 5 cycles	Passes
Volume shrinkage	Approx 22%
Movement accommodation factor	Approx +10% at 27°C
Water resistance	Excellent

Important Instructions :

- SUNKOLL CRACK PACKR gives detailed information on safety measures while handling the paint, which is available on request.
- Store the container with the lid tightly closed in an upright position, in a cool, dry place
- Keep out of reach of children and away from eatables.
- May be harmful if swallowed. In case of ingestion seek immediate medical attention.
- Wear eye protection during application. In case of contact with eyes, rinse immediately with plenty of water and seek medical advice.
- In case of skin contact immediately wash skin with soap and plenty of water. Get medical attention if irritation develops or persists.
- Do not breathe vapour or spray. It is recommended to wear suitable nose pad during sanding and surface preparation to avoid dust inhalation.
- Do not pour leftover paint down the drain or in water courses.
- In the event of spills, contain spillage using sand or earth.
- No added Lead, Mercury or Chromium compounds.

**SUNKOLL CRACK
PACKR**

SUNKOLL[®]
ABILITY ♦ STABILITY ♦ DURABILITY

नए भारत क नई ताकत



SUNKOLL Green Building Index :

SUNKOLL Range of Products are most eco-friendly and suitable to use in all kind of buildings including certified green. Apart from using best of international raw material for best performance, SUNKOLL procure the major raw material locally to safeguard environment.

SUNKOLL Quality & Safety Assurance

Products supplied are safe to use by any worker at site. However proper tools and safety measures must be in place for prolong working. The gloves, safety glasses and other protection measure must be followed as per local regulation.

Declaration :

Check before using the product about performance and final expected results. **SUNKOLL** cannot be held All the above information and results are provided based on **SUNKOLL** internal quality test. Customer must responsible for any damage of whatsoever nature at site.

UNIT - 1 SUNKOLL INDUSTRIES LIMITED

Plot No. 62, Tarang Industrial Estate
Hadamtada Ta. Kotda Sangani N.H. 8-B
Rajkot(Gujarat) - 360 311

UNIT - 2 SUNKOLL INDUSTRIES LIMITED BARODA

UNIT - 3 SUNKOLL INDUSTRIES LIMITED JAIPUR

UNIT - 4 SUNKOLL INDUSTRIES LIMITED GUWAHATI

TECHNICAL SERVICES & CUSTOMER CARE MANAGER : +91 70698 82251

TOLL FREE : 1800 890 2343

Email: sunkollindltd@gmail.com

www.sunkoll.com

Water Proofing Chemicals | Adhesives | Grouts/Epoxy Grouts | Wall Putty